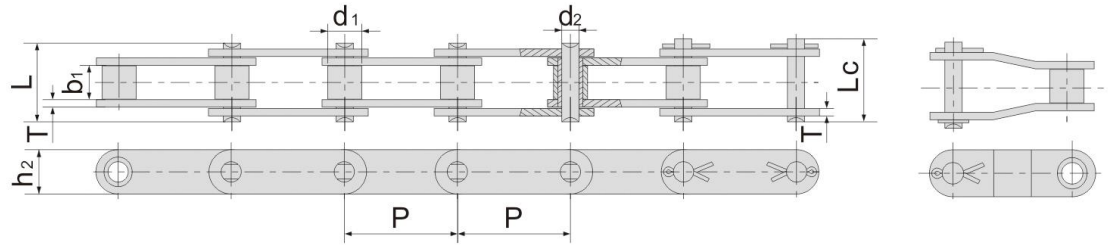


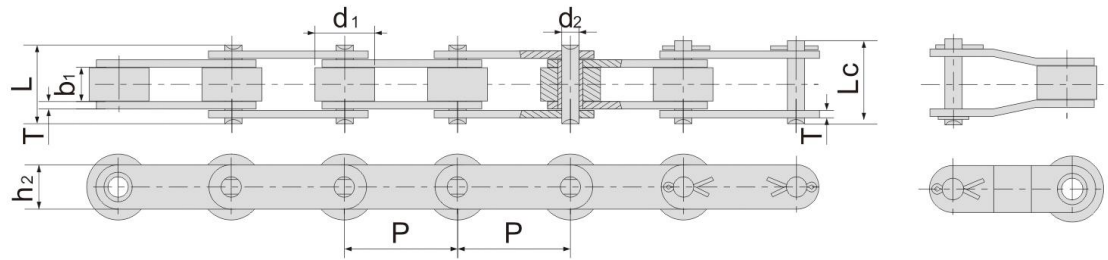
Double Pitch Conveyor Chain

双节距输送链条

Standard roller type
标准滚子系列



Large roller type
大滚子系列



Standard Roller Chain

ISO Chain No.	ANSI Chain No.	Pitch	Width between inner plates	Roller diameter	Plate technical data		Pin Technique data			Min tensile strength	Average tensile strength	Approx unit weight
					链板参数		销轴参数					
					链板厚度	链板宽度	销轴直径	销轴长度	接销长度			
ISO链号	ANSI链号	P (mm)	b1 (mm)	d1 (mm)	T (mm)	h2 (mm)	d2 (mm)	L (mm)	Lc (mm)	Q (KN)	Q0 (KN)	q≈ (Kg/m)
C208A	C2040	25.40	7.85	7.92	1.50	12.00	3.96	16.60	17.80	14.10	16.70	0.50
C208AL	C2042	25.40	7.85	15.88	1.50	12.00	3.96	16.60	17.80	14.10	16.70	0.84
C208AH	C2040H	25.40	7.85	7.92	2.00	12.00	3.96	18.80	19.90	14.10	17.20	0.65
C210A	C2050	31.75	9.40	10.16	2.00	15.00	5.08	20.70	22.20	22.20	28.10	0.78
C210AL	C2052	31.75	9.40	19.05	2.00	15.00	5.08	20.70	22.20	22.20	28.10	1.27
C212A	C2060	38.10	12.57	11.91	2.40	18.00	5.94	25.90	27.70	31.80	36.80	1.12
C212AL	C2062	38.10	12.57	22.23	2.40	18.00	5.94	25.90	27.70	31.80	36.80	1.61
C212AH	C2060H	38.10	12.57	11.91	3.20	18.00	5.94	29.20	31.60	31.80	41.60	1.44
C212AHL	C2062H	38.10	12.57	22.23	3.20	18.00	5.94	29.20	31.60	31.80	41.60	2.07
C216A	C2080	50.80	15.75	15.88	3.20	24.00	7.92	32.70	36.50	56.70	65.70	2.08
C216AL	C2082	50.80	15.75	28.58	3.20	24.00	7.92	32.70	36.50	56.70	65.70	3.12
C216AH	C2080H	50.80	15.75	15.88	4.00	24.00	7.92	36.20	39.40	56.70	70.00	2.54
C216AHL	C2082H	50.80	15.75	28.58	4.00	24.00	7.92	36.20	39.40	56.70	70.00	3.58
C220A	C2100	63.50	18.90	19.05	4.00	30.00	9.53	40.40	44.70	88.50	102.60	3.01
C220AL	C2102	63.50	18.90	39.67	4.00	30.00	9.53	40.40	44.70	88.50	102.60	4.83
C220AH	C2100H	63.50	18.90	19.05	4.80	30.00	9.53	43.60	46.90	88.50	112.40	3.56
C220AHL	C2102H	63.50	18.90	39.67	4.80	30.00	9.53	43.60	46.90	88.50	112.40	5.38
C224A	C2120	76.20	25.22	22.23	4.80	35.70	11.10	50.30	54.30	127.00	147.30	4.66
C224AL	C2122	76.20	25.22	44.45	4.80	35.70	11.10	50.30	54.30	127.00	147.30	7.66
C224AH	C2120H	76.20	25.22	22.23	5.60	35.70	11.10	53.50	57.50	127.00	160.90	5.26
C224AHL	C2122H	76.20	25.22	44.45	5.60	35.70	11.10	53.50	57.50	127.00	160.90	8.26
C232A	C2160	101.60	31.75	28.58	6.40	47.80	14.27	64.80	69.60	226.80	278.90	8.23
C232AL	C2162	101.60	31.75	57.15	6.40	47.80	14.27	64.80	69.60	226.80	278.90	11.95
C232AH	C2160H	101.60	31.75	28.58	7.20	47.80	14.27	68.20	73.00	226.80	285.80	9.06
C232AHL	C2162H	101.60	31.75	57.15	7.20	47.80	14.27	68.20	73.00	226.80	285.80	12.77